

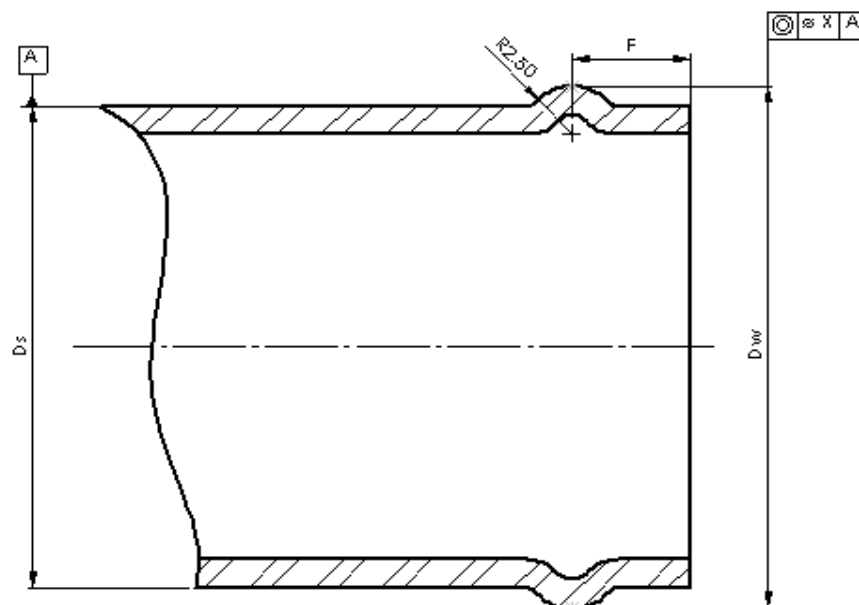


FRANKLIN SILENCERS LTD.

Quality Exhaust Systems and Manipulated Tubular Components

Hose Bead Capability List

| Ds | | Dw | | F | X |
|----------|--------|--------|--------|---|------|
| Imperial | Metric | Max | Min | | |
| 3/4" | 19.05 | 21.35 | 21.10 | 6 | 0.15 |
| 7/8" | 22.20 | 24.70 | 24.20 | | |
| 1" | 25.40 | 27.90 | 27.40 | | |
| 1 1/8" | 28.50 | 31.00 | 30.50 | | |
| 1 1/4" | 31.70 | 34.20 | 33.70 | | |
| 1 3/8" | 34.90 | 37.40 | 36.90 | | |
| 1 1/2" | 38.10 | 41.10 | 40.60 | | |
| 1 5/8" | 41.20 | 44.20 | 43.70 | 7 | 0.30 |
| 1 3/4" | 44.40 | 47.40 | 46.90 | | |
| N/A | 45.00 | 48.00 | 47.50 | | |
| 1 7/8" | 47.60 | 50.60 | 50.10 | | |
| 2" | 50.80 | 54.30 | 53.80 | | |
| 2 1/4" | 57.10 | 60.60 | 60.10 | | |
| N/A | 60.00 | 63.50 | 63.00 | | |
| 2 1/2" | 63.50 | 67.00 | 66.50 | | |
| N/A | 65.00 | 68.50 | 68.00 | | |
| 2 3/4" | 69.80 | 73.30 | 72.80 | | |
| 3" | 76.20 | 79.70 | 79.20 | | |
| 3 1/2" | 88.90 | 92.40 | 91.90 | | |
| 4" | 101.60 | 105.10 | 104.60 | | |
| 4 1/2" | 114.30 | 118.10 | 117.60 | | |
| 5" | 127.00 | 130.50 | 130.00 | | |



This tooling list has been generated as a design aid for customers wishing to utilise our standard hose bead tooling. These sizes are based on the hose bead specification in DIN 3021-3